

BAYHILL 73" DOUBLE SINK CABINET

ARIEL

R073D

BASE CABINET DIMENSIONS

72" W x 21.5" D x 34.5" H

FEATURES

- Solid wood frame & plywood panels
- Dovetail drawers and joints
- Soft closing doors & drawers

HARDWARE FINISHES



Satin Nickel



Satin Brass



Satin Black

AVAILABLE COLORS



White



Grey



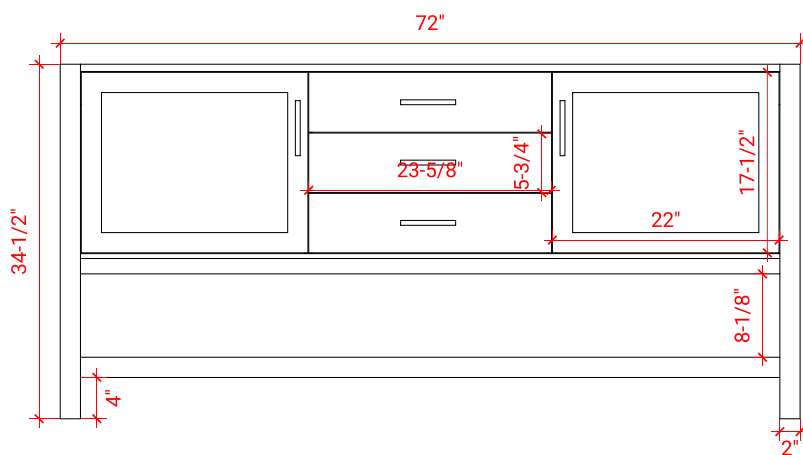
Espresso



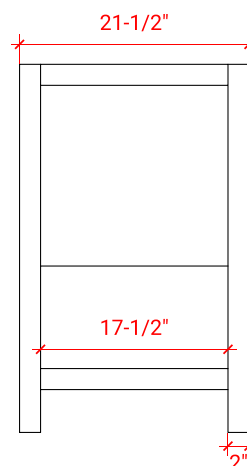
Midnight Blue



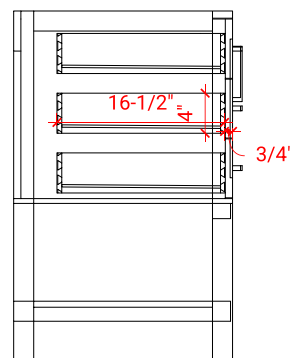
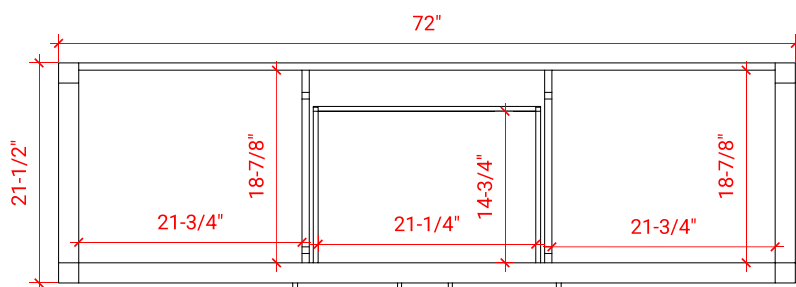
FRONT VIEW



SIDE VIEW



PLAN VIEW



ARIEL

73" W x 22" D x 1.5" H

- Solid countertop with mitered edges & seams
- Undermount white oval sink
- Pre-drilled for 8" widespread faucet

- Countertop
- Matching Backsplash
- Sink

The technical drawing shows two views of a rectangular plate. The overall dimensions are 73 inches by 22 inches. The front view (top) shows three holes along the top edge, each with a diameter of 2-1/2 inches. The distance between the first two holes is 8 inches, and the distance between the second and third holes is 1-3/8 inches. A large oval feature is located in the center, with a horizontal width of 16-1/4 inches and a vertical height of 13 inches. The distance from the bottom edge of the oval to the bottom edge of the plate is 4 inches. The distance from the left edge of the oval to the left edge of the plate is 6 inches. The back view (bottom) shows the same plate from the opposite side, with the same dimensions and features.

Technical drawing of a mechanical part. The part has a vertical section on the left and a horizontal section on the right. The horizontal section has a total width of 3/4" and a height of 1-1/2". The vertical section has a height of 3/4". A dashed line indicates a fillet with a radius of R2 at the corner where the horizontal section meets the vertical section.

An isometric drawing of a rectangular plate. The dimensions are indicated by red dimension lines: the length is 22", the width is 13", and the thickness is 4". The plate has two circular holes, one on each of the long sides. Each hole is surrounded by three small circular features, possibly mounting points or rivets. The drawing is oriented diagonally.