

## MAGNOLIA 42" CENTER SINK CABINET

# ARIEL

S042S



### BASE CABINET DIMENSIONS

42" W x 21.5" D x 34.5" H

### FEATURES

- Solid wood frame & plywood panels
- Dovetail drawers and joints
- Soft closing doors & drawers

### HARDWARE FINISHES



Satin Nickel



Satin Brass



Satin Black

### AVAILABLE COLORS



White

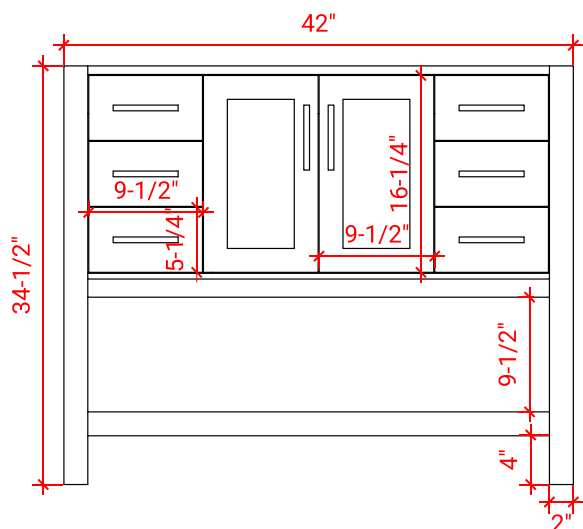


Grey

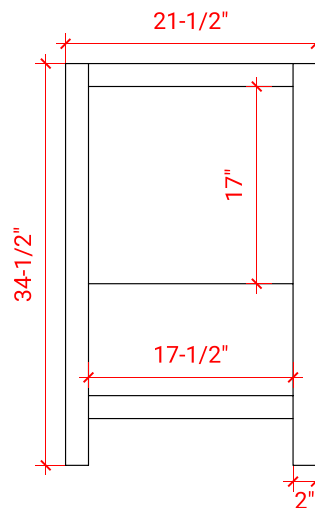


Midnight Blue

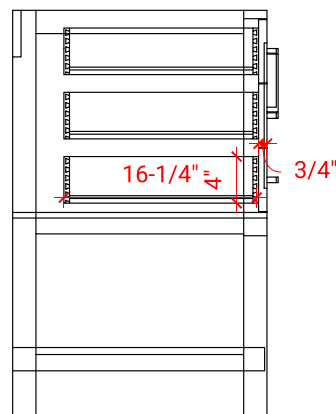
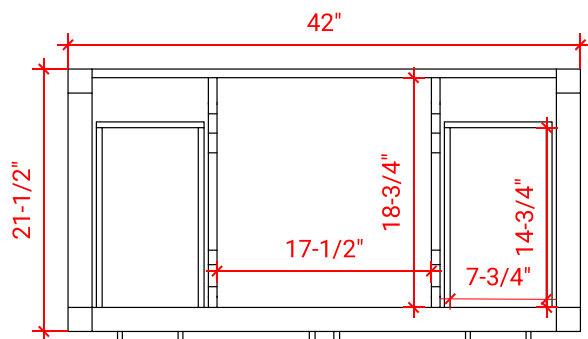
FRONT VIEW



SIDE VIEW



PLAN VIEW



## 43" RECTANGLE SINK THIN COUNTERTOP

# ARIEL

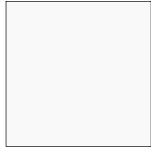
### OVERALL DIMENSIONS

43" W x 22" D x 1.5" H

### COUNTERTOP OPTIONS



Carrara Marble  
CW-043S-REC-CT



White Quartz  
WQ-043S-REC-CT

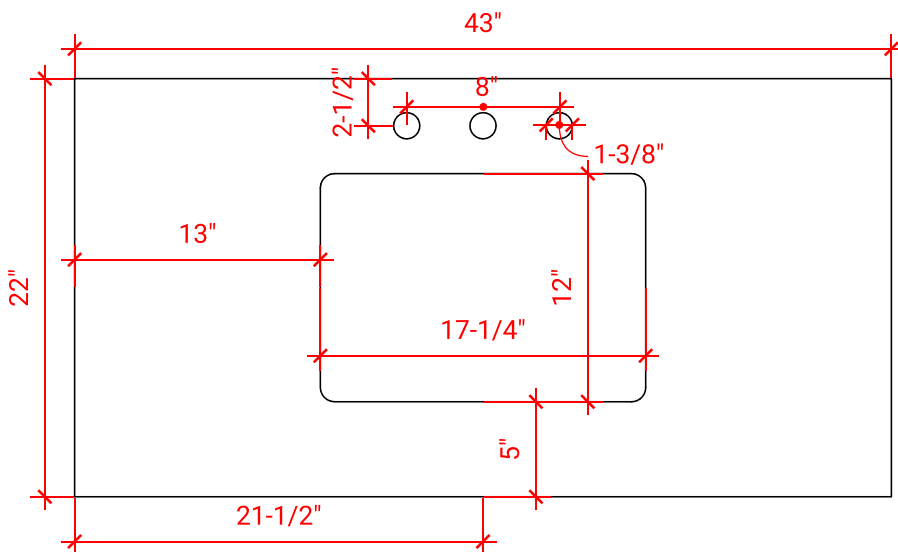
### FEATURES

- Solid countertop with mitered edges & seams
- Undermount white rectangular sink
- Pre-drilled for 8" widespread faucet

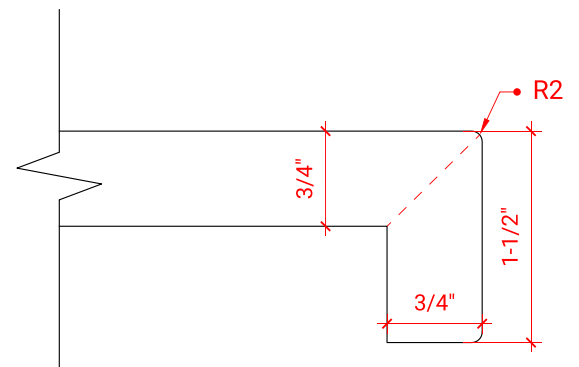
### INCLUDED

- Countertop
- Matching Backsplash
- Sink

COUNTERTOP PLAN VIEW



EDGE SIDE VIEW



THREE DIMENSIONAL COUNTERTOP VIEW

