

## MAGNOLIA 48" CENTER SINK CABINET

# ARIEL

S048S



### BASE CABINET DIMENSIONS

48" W x 21.5" D x 34.5" H

### FEATURES

- Solid wood frame & plywood panels
- Dovetail drawers and joints
- Soft closing doors & drawers

### HARDWARE FINISHES



Satin Nickel



Satin Brass



Satin Black

### AVAILABLE COLORS



White

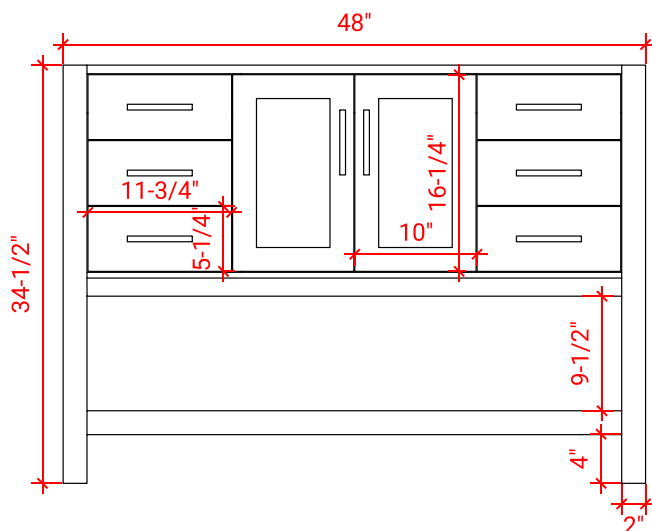


Grey

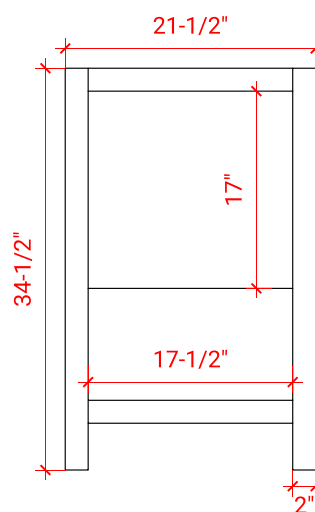


Midnight Blue

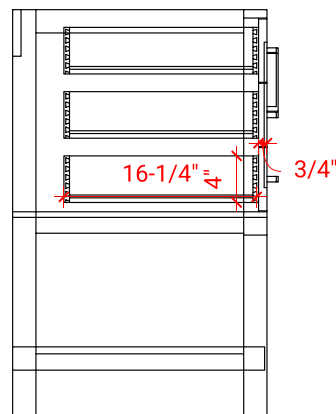
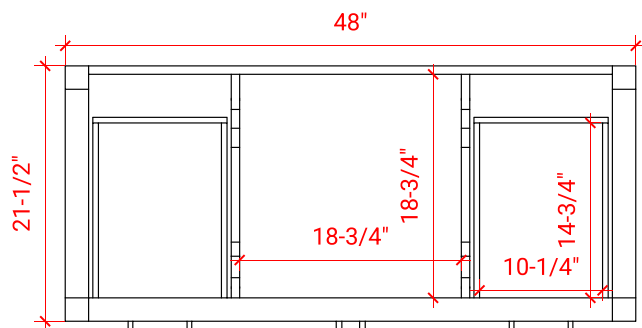
FRONT VIEW



SIDE VIEW



PLAN VIEW



## 49" OVAL SINK THIN COUNTERTOP

# ARIEL

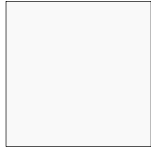
### OVERALL DIMENSIONS

49" W x 22" D x 1.5" H

### COUNTERTOP OPTIONS



Carrara Marble  
CW-049S-OVL-CT



White Quartz  
WQ-049S-OVL-CT

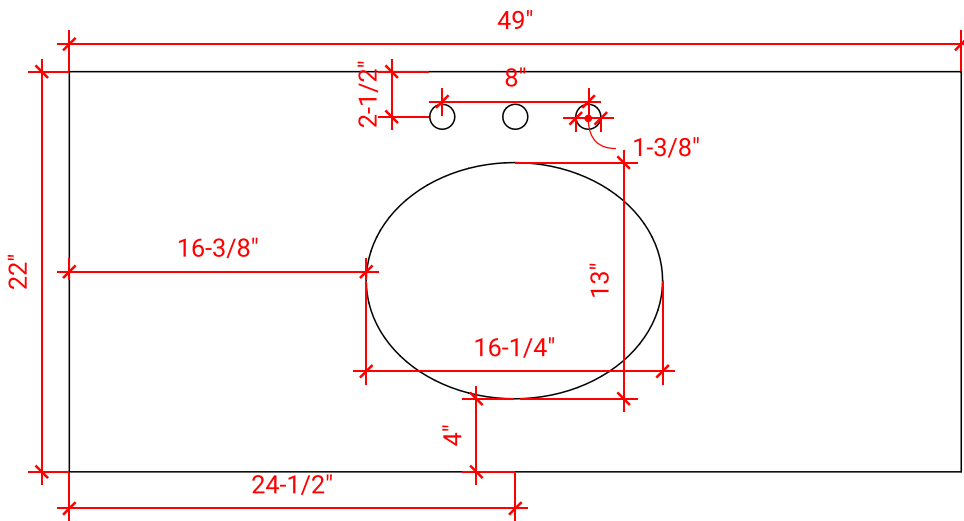
### FEATURES

- Solid countertop with mitered edges & seams
- Undermount white oval sink
- Pre-drilled for 8" widespread faucet

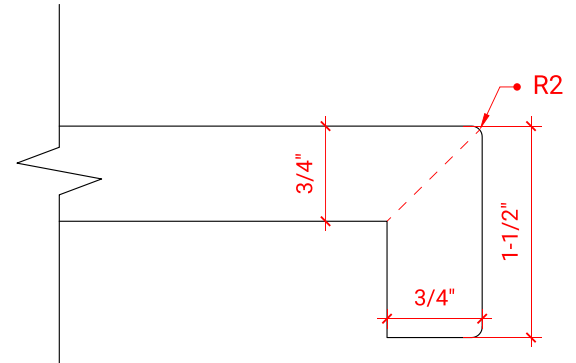
### INCLUDED

- Countertop
- Matching Backsplash
- Sink

### COUNTERTOP PLAN VIEW



### EDGE SIDE VIEW



### THREE DIMENSIONAL COUNTERTOP VIEW

