

MAGNOLIA 42" CENTER SINK CABINET

ARIEL

S042S



BASE CABINET DIMENSIONS

42" W x 21.5" D x 34.5" H

FEATURES

- Solid wood frame & plywood panels
- Dovetail drawers and joints
- Soft closing doors & drawers

HARDWARE FINISHES



Satin Nickel



Satin Brass



Satin Black

AVAILABLE COLORS



White

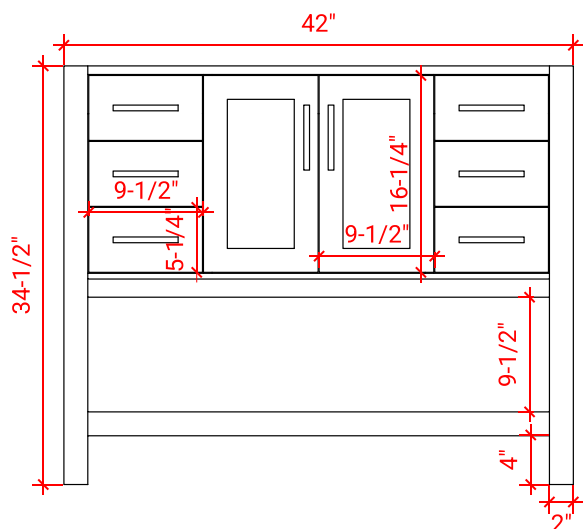


Grey

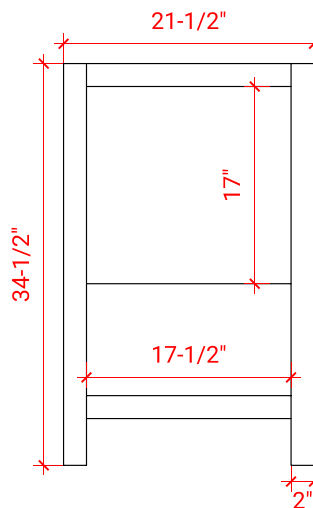


Midnight Blue

FRONT VIEW



SIDE VIEW



PLAN VIEW

